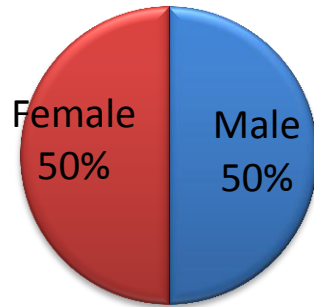


# Langley Health Centre survey - March 2015

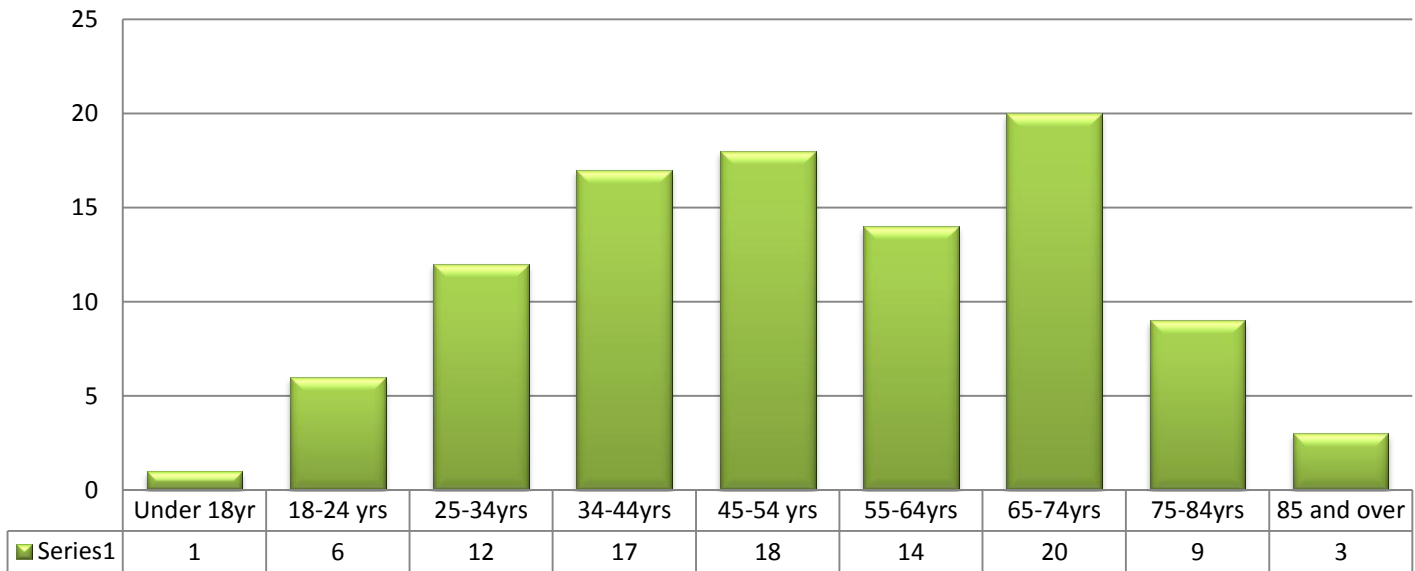
## Sex of Patients Answering survey

1. SEX	
Male	50
Female	50

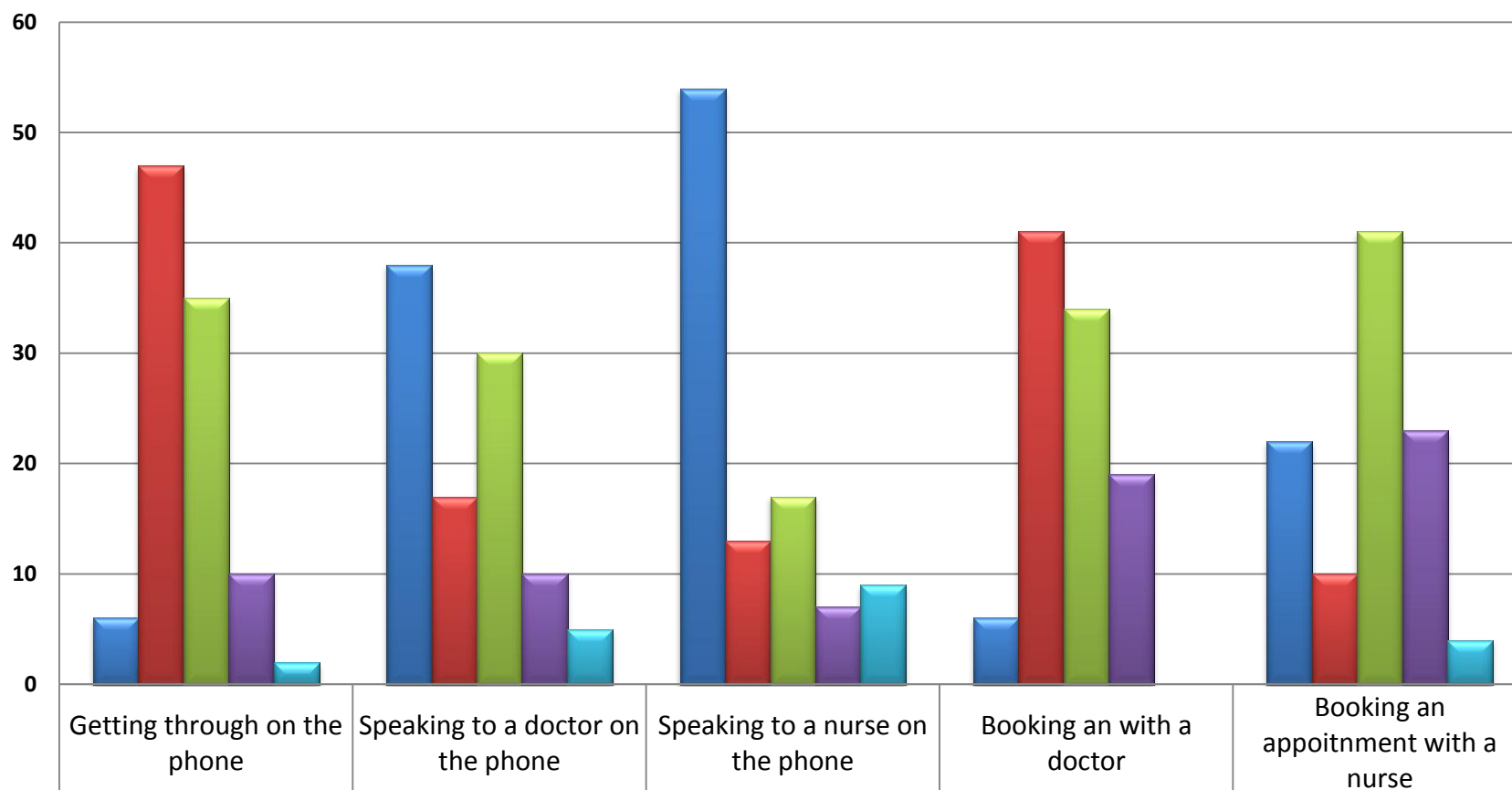


2/ Age	
Under 18yr	1
18-24 yrs	6
25-34yrs	12
34-44yrs	17
45-54 yrs	18
55-64yrs	14
65-74yrs	20
75-84yrs	9
85 and ove	3

## Age Distribution of patients

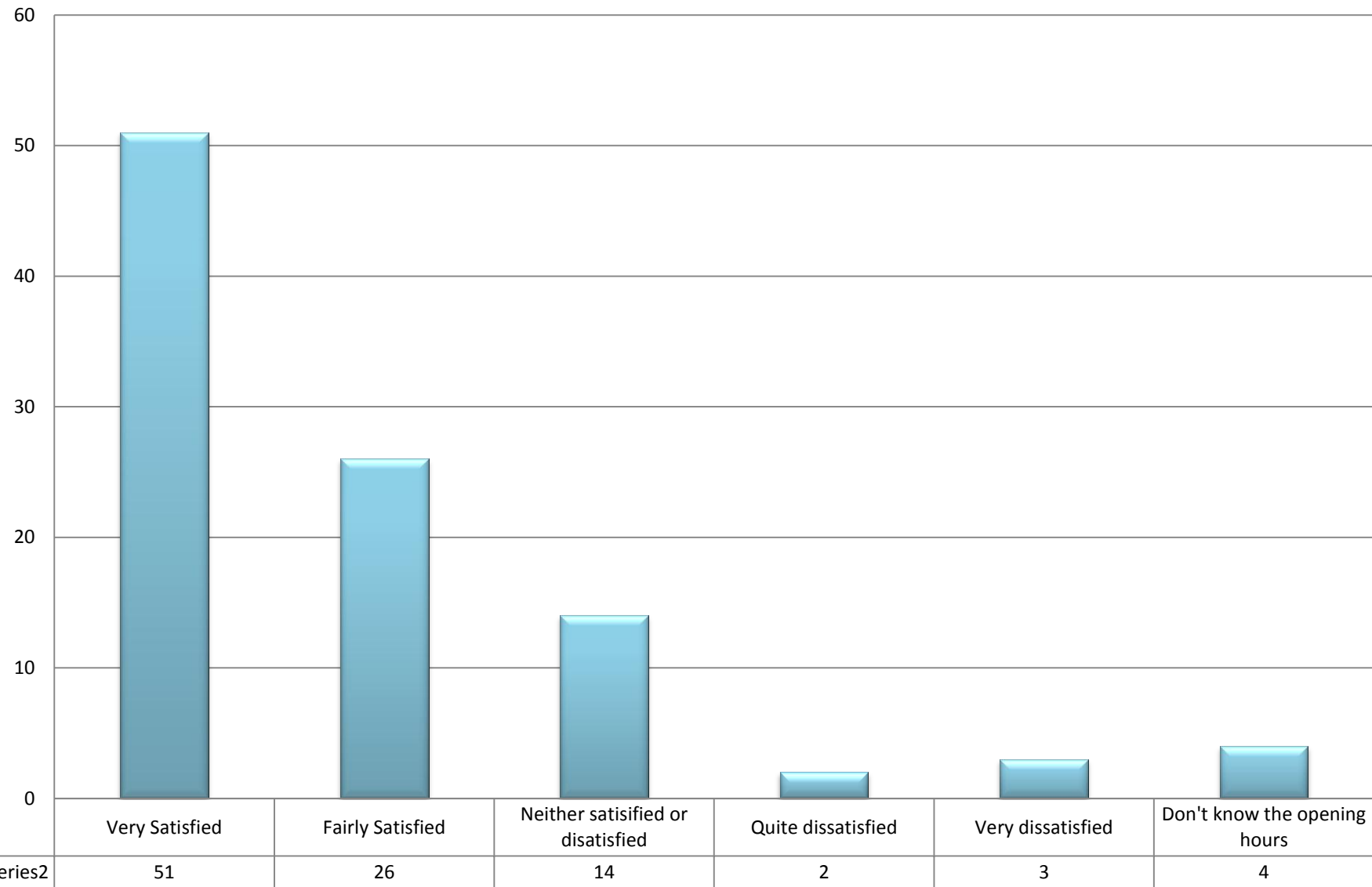


## In the past 6 months, how easy have you found the following?....

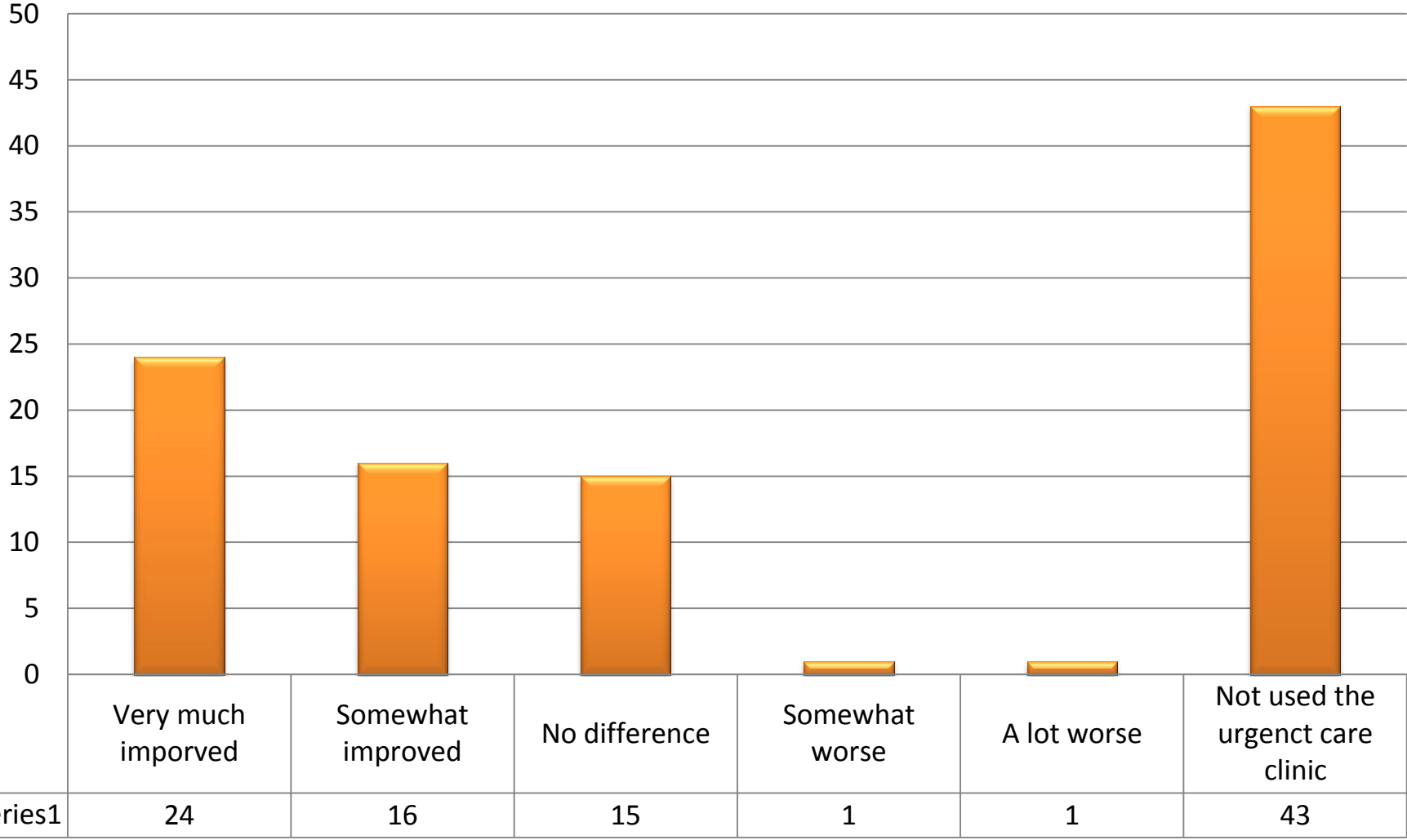


Not tried	6	38	54	6	22
Not Very Easy	47	17	13	41	10
Fairly Easy	35	30	17	34	41
Very Easy	10	10	7	19	23
Don't know	2	5	9	0	4

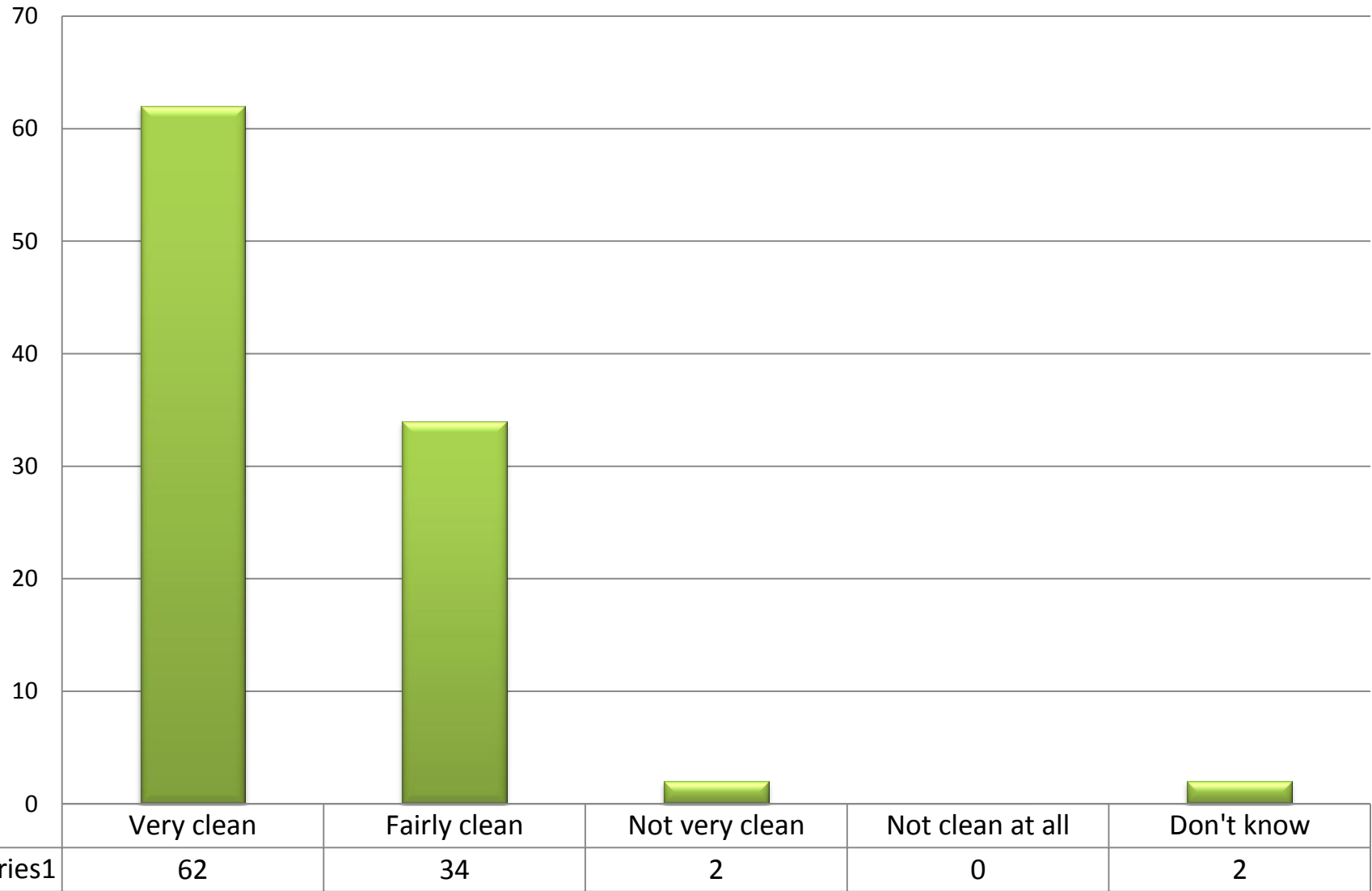
## How satisfied are you with the opening hours of the surgery?



### The Urgent Care clinic now runs 4 mornings weekly, do you think this has improved your access?

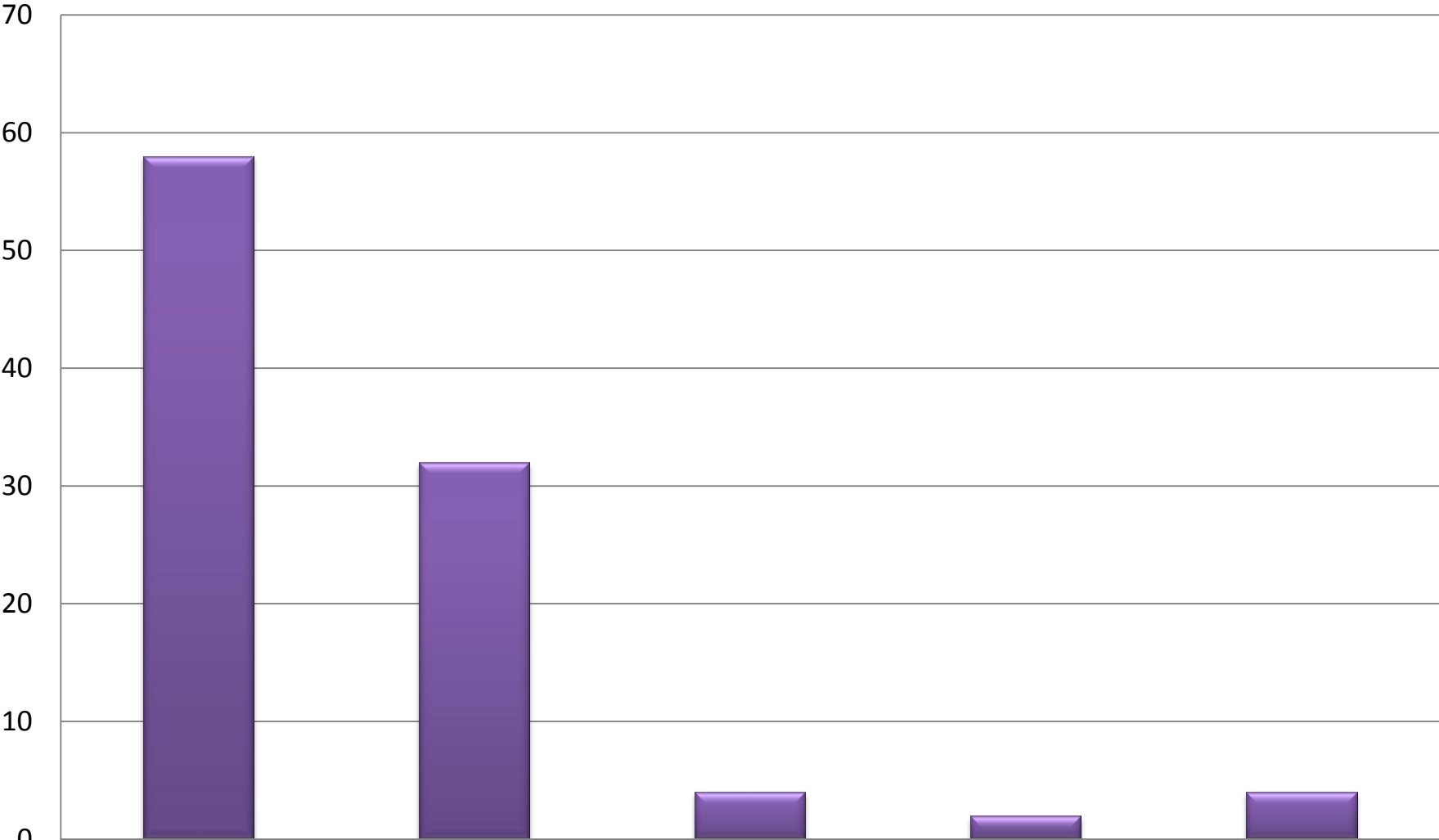


### How clean is the GP surgery?



■ Series1

### How helpful do you find the recepitionists at the surgery?



Series1

58

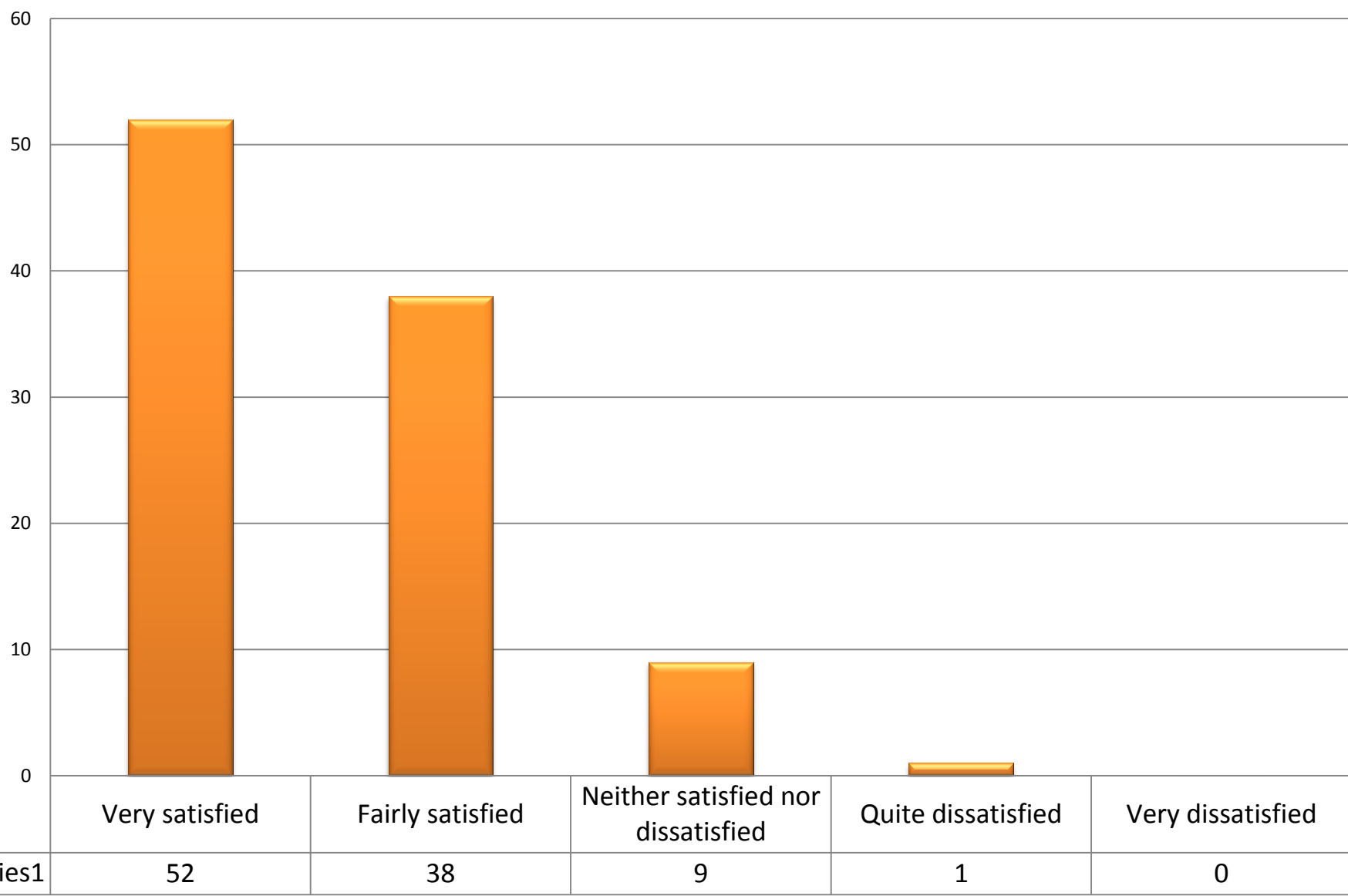
32

4

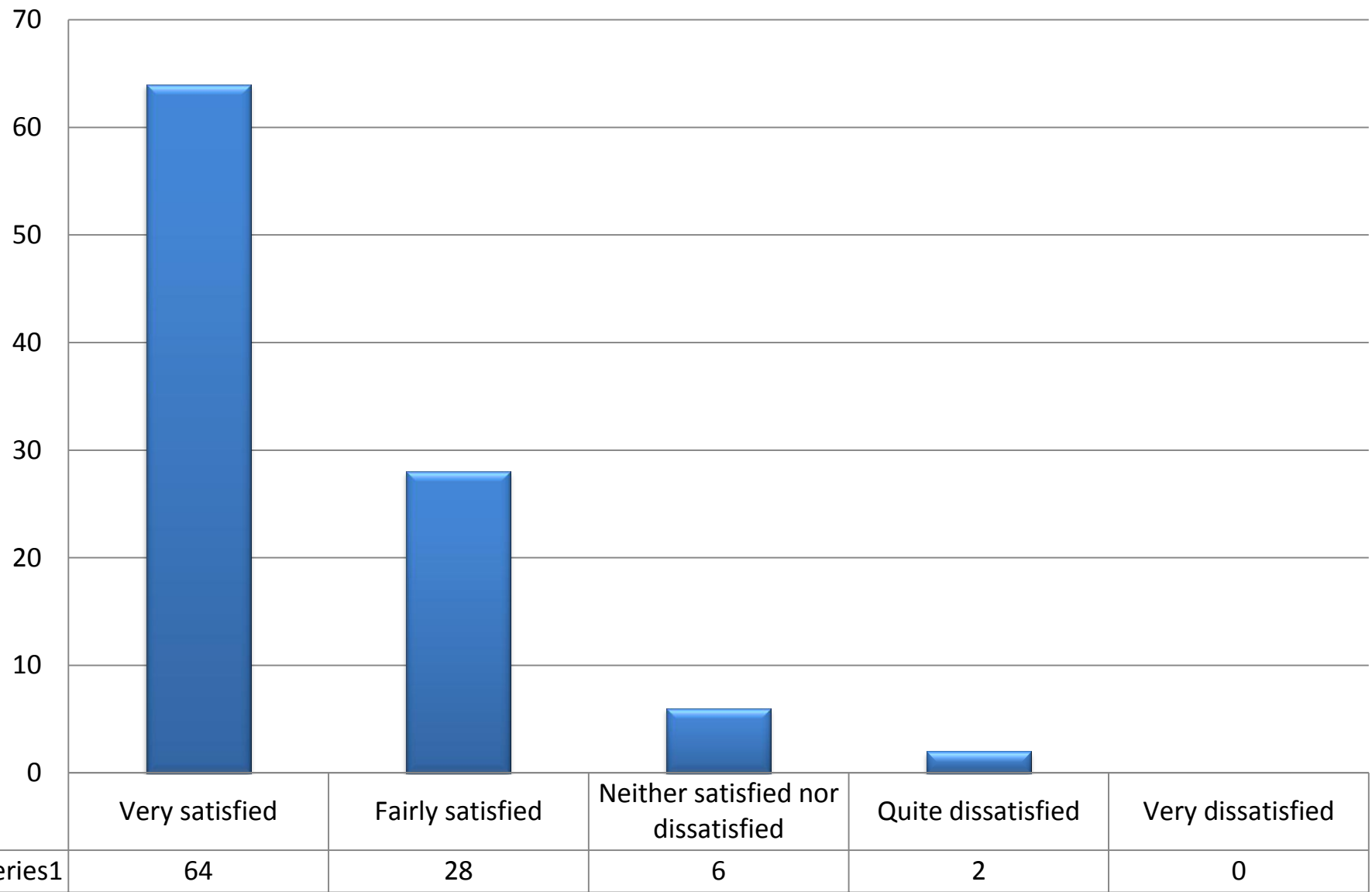
2

4

### In general how satisfied are you with the care you receive from the doctors?

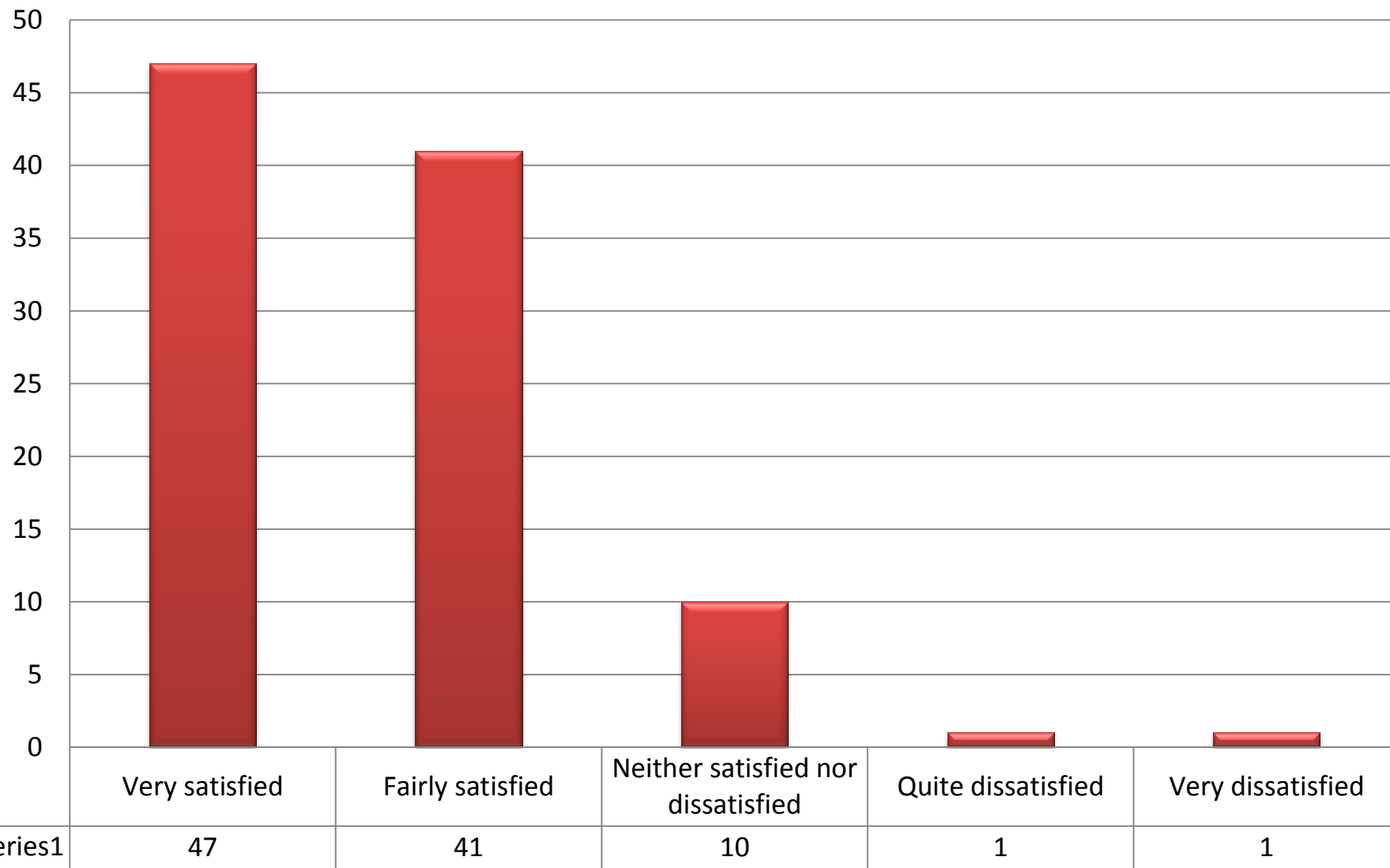


### In general how satisfied are you with the care you receive from the nurses?





### In general how satisfied are you with the overall care you receive from the surgery?



Series1

## Would you recommend the surgery to someone who has just moved into the local area?

